



Thermoplan

NBT *ThermoPlan*® | System description:

NBT *ThermoPlan*® system is a thin bed insulated structural solid wall, with render finish externally. Other finishes (claddings such as stone, brick, timber etc) are available as *NBT ThermoPlan*® *Clad Systems*. Superinsulated systems are available with external insulation as *NBT ThermoPlan*® *Plus*.

The *ThermoPlan*® blocks are fired aerated clay, planed to a tolerance of less than 1mm. The mortar bed is applied by roller, without mortar in the perps. The systems come with a full range of lintels, corner blocks, fixings, tools etc. The render and plaster systems are mineral, and are guaranteed for the blocks.

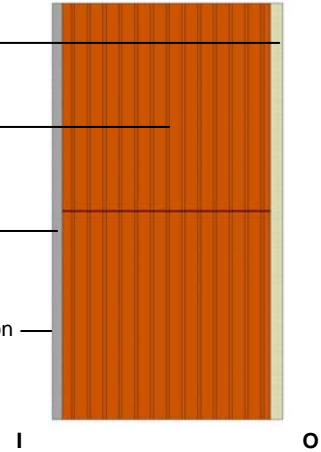
NBT *ThermoPlan*®

15mm BaunitBayosan Render System & Décor Finish

NBT *ThermoPlan*® Block on Thin Bed Mortar

12mm Mineral Plaster

NBT Breathable Trade Emulsion



System Application:

NBT *ThermoPlan*® Systems are suitable for low rise buildings (up to 4 storeys) of all kinds including housing, flats, offices and schools. Insulated basements and cellars can also be built with NBT *ThermoPlan*® systems, with suitable tanking. NBT *ThermoPlan*® systems can also be used as infill in high rise and large span buildings. Please contact NBT for more details.



System Benefits:

- Excellent thermal and airtightness performance, according to new part L, with very low γ values
- Modern Method of Construction, easy and foolproof
- Very quick construction: typically 3 times faster than cavity walling
- Highly cost efficient
- Simple, robust detailing with full systems parts
- Breathing construction
- Full design and site support from NBT
- List of approved applicators
- Tried and tested system, fully certified

Environmental Performance:

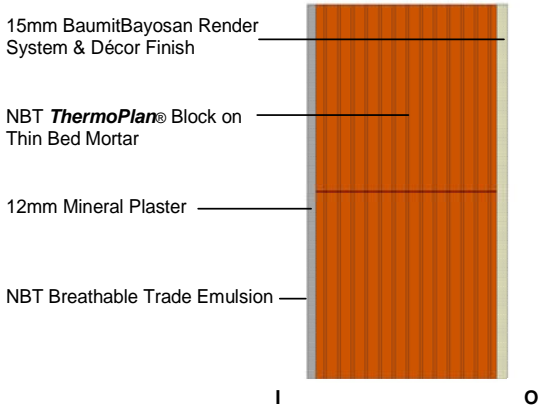
- BRE Green Guide rating: A
- 30% less embodied CO₂ than comparable cavity wall
- Non-toxic and sustainable materials



Thermoplan

Technical details: Thermal values

NBT *ThermoPlan*®



NBT <i>ThermoPlan</i> ® System Block ZT10 & ZV10	K-Value (W/mK)	U-Value (W/m ² K)
300mm Wide	0.10	0.31
365mm Wide	0.10	0.26
400mm Wide	0.10	0.24
425mm Wide	0.10	0.22

NBT <i>ThermoPlan</i> ® System Block ZT11 & ZV11	K-Value (W/mK)	U-Value (W/m ² K)
300mm Wide	0.11	0.33
365mm Wide	0.11	0.28

Calculation of ψ (psi) and γ values is available for specific build ups, enabling better thermal/ carbon assessment according to New Part L calculations, for higher performance and/or thinner structures. All block systems have a minimum of 90 mins fire resistance.

Full System Components:

- External walling:** A full range of standard blocks and specials, including corner blocks, reveal blocks, make up blocks, insulated clay lintels, blocks for ring beams etc.
- Mortars:** Thin bed mortar is provided free with the blocks. Insulated mortar is available for cuts and repairs.
- Internal walling:** Acoustic load bearing Thermoplan blocks and mortar for partitions and party walls
- Fixings and tools:** Fixings for internal walls, wall plates, windows etc. A full range of tools is available for all tasks.
- Renders:** Compatible, guaranteed external through coloured mineral renders with over 200 colours
- Plasters:** A range of guaranteed lime, clay, lime-cement and gypsum internal plasters.

NBT Support:

- Design support:** Full design support including assistance with detailing, thermal and other calculation, suggested engineering details
- Training:** either at NBT or on site for applicators, site managers etc
- Site Support:** NBT will assist on site, giving advice on technical, application and quality issues. NBT have a service to work with contractors who are new to the product with full training available.
- Approved Applicators:** NBT have a list of trained and approved applicators for the various systems processes.

