



Thermoplan

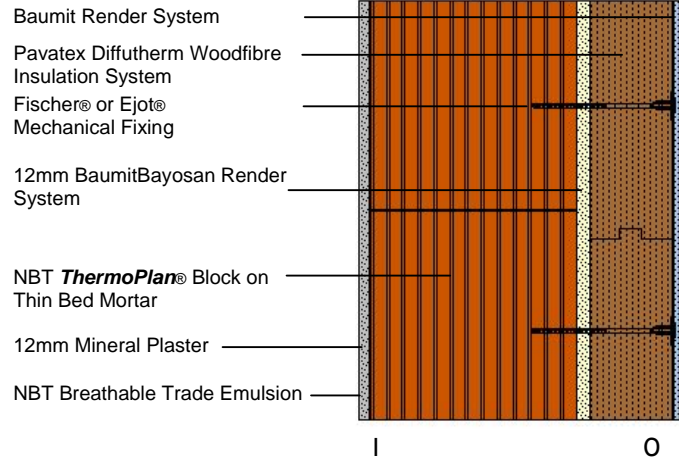
NBT ThermoPlan® Plus | System description:

NBT ThermoPlan® Plus system is a thin bed insulated structural solid wall over clad with a layer of Pavatex Woodfibre Insulation to form a superinsulated solid breathable wall section with render finish.

Other system options available are a rendered system as *NBT ThermoPlan®* and a Clad version as *NBT ThermoPlan® Clad*.

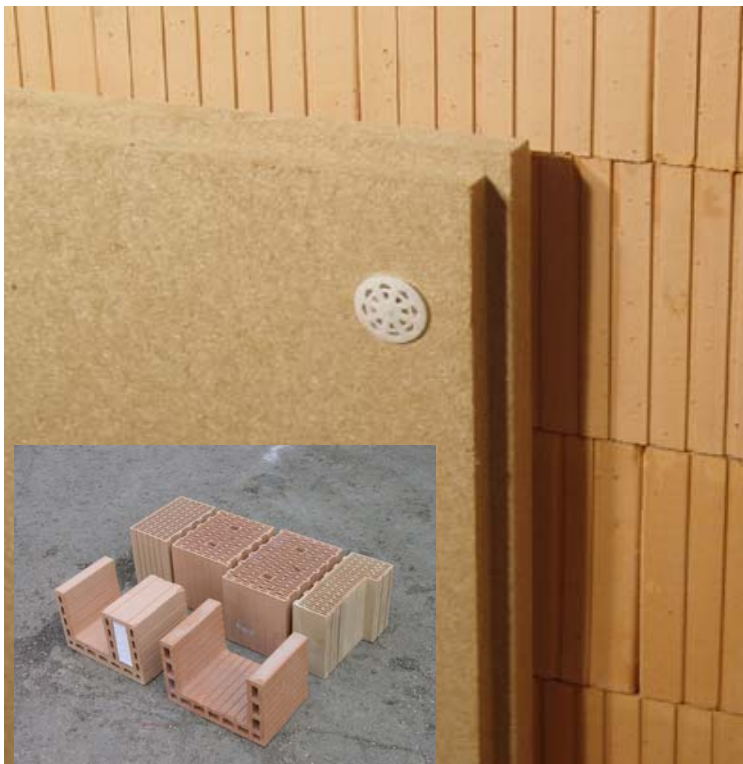
The ThermoPlan® blocks are fired aerated clay, planed to a tolerance of less than 1mm. The systems come with a full range of lintels, corner blocks, insulating mortar, ties, etc. The woodfibre system comes with different thickness boards, fixings and a guaranteed range of thin coat renders.

NBT ThermoPlan® Plus



System Application:

NBT ThermoPlan® Systems are suitable for low rise buildings (up to 4 storeys) of all kinds including housing, flats, offices and schools, Insulated basements and cellars can also be built with NBT ThermoPlan® systems, with suitable tanking. NBT ThermoPlan® Plus system is particularly suitable as infill in high rise and large span buildings. Please contact NBT for more details.



System Benefits:

- Excellent thermal and airtightness performance, complying to new part L
- Modern Method of Construction, easy and foolproof
- Very quick construction: typically 3 times faster than cavity walling
- Highly cost efficient
- Simple, robust detailing with full systems parts
- Breathing construction
- Full design and site support from NBT
- List of approved applicators
- Tried and tested system, fully certified

Environmental Performance:

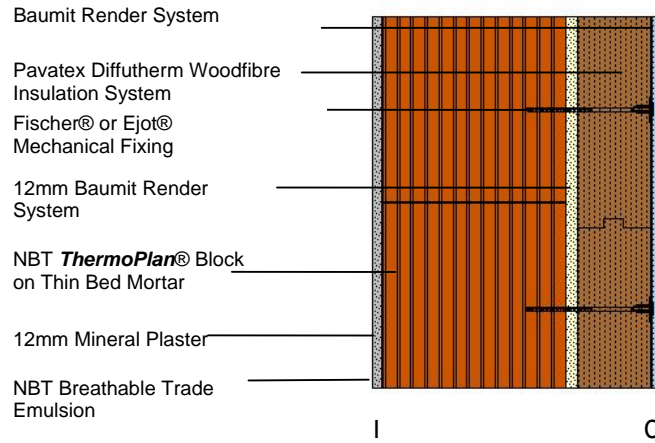
- BRE Green Guide rating: A
- 30% less embodied CO2 than comparable cavity wall
- Non-toxic and sustainable materials



Thermoplan

Technical details: Thermal values

NBT ThermoPlan® Plus



U-Values (W/m²K)

U-Values shown rounded up/down

| NBT ThermoPlan® Block | | + 60mm DIFFUTHERM | + 80mm DIFFUTHERM | + 100mm DIFFUTHERM |
|-----------------------|------------|-------------------|-------------------|--------------------|
| ZT9 ZV9 | 300mm Wide | 0.20 | 0.19 | 0.17 |
| | 365mm Wide | 0.18 | 0.16 | 0.15 |
| | 425mm Wide | 0.16 | 0.15 | 0.14 |
| ZT11 ZV11 | 240mm Wide | 0.27 | 0.24 | 0.21 |
| | 300mm Wide | 0.23 | 0.21 | 0.19 |
| | 365mm Wide | 0.20 | 0.19 | 0.17 |
| | 425mm Wide | 0.18 | 0.17 | 0.16 |
| | 490mm Wide | 0.17 | 0.15 | 0.14 |

Calculation of ψ (psi) and γ values is available for specific build ups, enabling better thermal/ carbon assessment according to New Part L.

Full System Components:

Walling: External and Internal wall systems. Corner blocks, reveal blocks, make up blocks, insulated clay lintels, blocks for ring beams, wall ties.

Mortars: Thin bed mortar is provided free with the blocks. Insulated mortar is available for cuts and repairs.

Insulation boards: Interlocking, water resistant Diffutherm boards (60,80,100mm), square edged backing insulation Pavatherm boards (20 to 100mm) and plinth and reveal boards.

Fixings, tracks and tapes: Insulated screw and staple fixings, along with starter tracks, and sealing tapes

Render system: A fully warranted thin coat mineral render system from NBT Baunit, with a over 200 colours in many types of finish. Comes with full system of reinforcing meshes, beads, APU rails and window cills.

Plasters and paints: Breathing mineral based (including clay) plasters and environmental paints for internal upgrading of walls if required.

NBT Support:

Design support: Full design support including assistance with detailing, thermal and other calculation, suggested engineering details

Training: either at NBT or on site for applicators, site managers etc

Site Support: NBT will assist on site, giving advice on technical, application and quality issues. NBT have a service to work with contractors who are new to the product with full training available.

Approved Applicators: NBT have a list of trained and approved applicators for the various systems processes.

